



*Now Boarding.....  
Flights to Anywhere.....  
From Anywhere.....  
Name Your Destination*

Jane Milner  
[jane.milner@bcsemail.org](mailto:jane.milner@bcsemail.org)

Conni Mulligan  
[conni.mulligan@bcsemail.org](mailto:conni.mulligan@bcsemail.org)

Buncombe County Schools  
175 Bingham Road  
Asheville, NC 28806

NCETC 2007




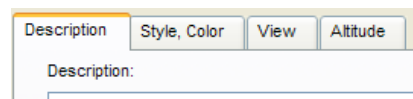
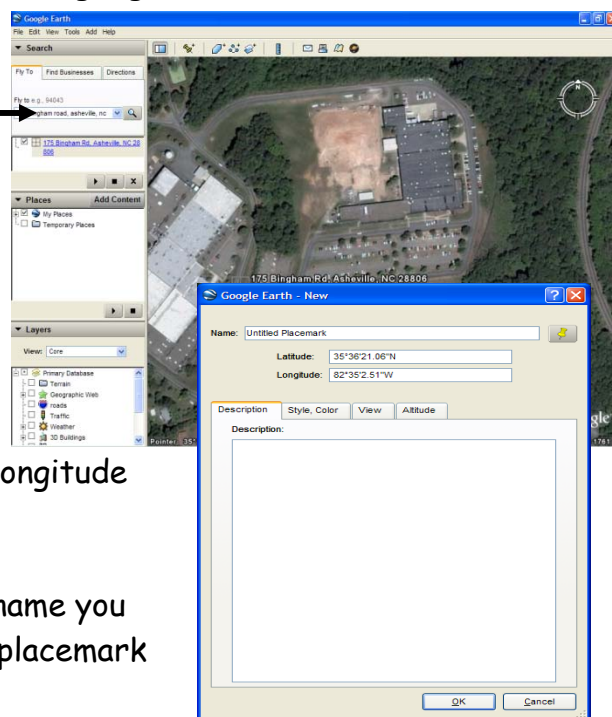
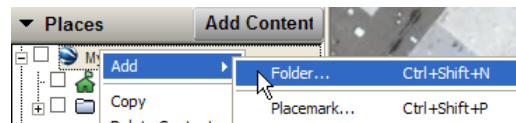
THRIVING IN THE 21ST CENTURY SCHOOLS

November 28, 2007

# Creating a Tour in Google Earth

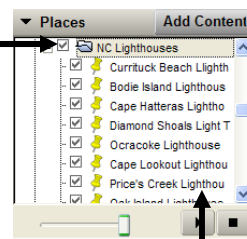
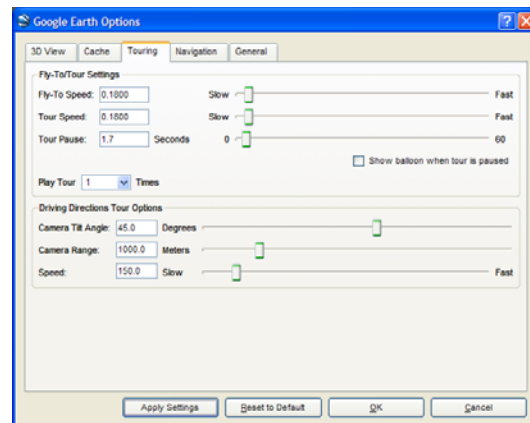


1. Launch Google Earth
2. To create a tour, start by creating a folder to hold all of your Placemarks. (Placemarks are the "sightseeing" stops that you take during your tour.)
  - a. Locate the **Places** pane on the left-hand side of the screen.
  - b. Right Click on **My Places**.
  - c. Select **Add**.
  - d. Select **Folder**.
  - e. Enter a name for the Folder.
  - f. Determine if you want to
    - Allow the folder to be expanded
    - Show contents as options (Radio button selection)
  - g. Click OK
3. Click on the folder that you just created. (It will become highlighted.)
4. **Fly to** the first location that you want to make a placemark in your tour by typing in the address and then clicking on the **Begin Search** (Magnifier) button.
5. Click on the **Add Placemark** button located  on the top toolbar.
6. A new window will pop up. Drag this window to the side so that you can see your placemark icon on the map.
  - a. Move the **Placemark** thumbtack to the correct location on your map. Notice the Latitude and Longitude will change as you drag the placemark.
  - b. Enter a title in the **Name** box.
  - c. Click on the **Placemark** icon to the right of the name you just entered to change the type/color/style of placemark to be used.
  - d. Enter a description.
  - e. Notice the other tabs. You can choose to add/change other types of information associated with this placemark.
  - f. Click OK
7. Repeat steps 3-6 to continue adding Placemarks for your tour. (If you would like your tour to be played in a particular order, drag the Placemarks into the correct location in the **My Places** pane.)
8. If you accidentally make a placemark that is not located inside of the folder - click on the placemark title and drag the placemark into the correct folder.



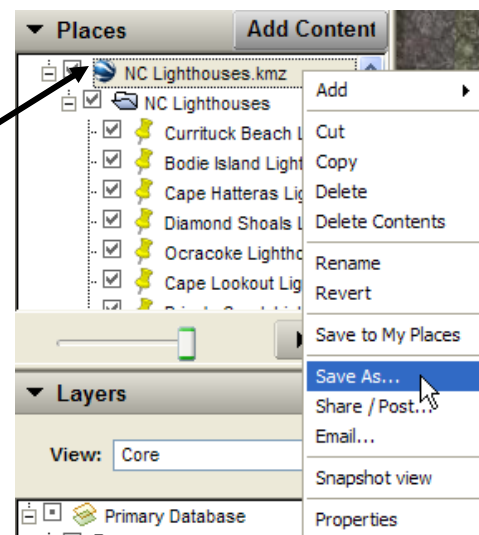
# Playing Your Tour

1. You may want to speed up or slow down the speed of your tour.
2. Click on the main folder in the **Places** pane on the left hand side of the screen to highlight it.
3. Click on **Tools** on the main toolbar.
4. Select **Options**.
5. Click on the **Touring Tab**.
6. Notice the different options available to you. You may have to play with the various settings to determine which works best for you.
7. Once you have made changes, click **OK**.
8. On the **Places** pane, place a check mark on the folder to select all of the Placemarks. (Note: If you have any other tours in the Places pane, deselect them before viewing your tour. Otherwise, all of the selected places may be played in the tour.)
9. Click the Play icon to view the tour.



# Saving Your Tour

1. Right click on the Main folder that contains all of your new Placemarks.
2. Select **Save As...**
3. Browse to the correct location for storage of the file.
4. Name the File.
5. You can choose from two different file types:
  - a. **KMZ** - a KML file that is zipped. This is so that Google Earth can easily recognize the file type and open it with the correct program automatically. Also choose this setting if you have additional items with your Placemarks (images, video, etc.)
  - b. **KML (Keyhole Markup Language)**- The basic file format for most Google Earth Files. This will also open Google Earth automatically but  
 To see a detailed description of KML and KMZ go to:  
[http://en.wikipedia.org/wiki/Keyhole\\_Markup\\_Language](http://en.wikipedia.org/wiki/Keyhole_Markup_Language)
6. Place the file on a server for all students to access or email the file. If the person opening the file has Google Earth, the file and all of the Placemarks will open in Google Earth.



# Web Resources

1. Google Earth Help Site  
<http://earth.google.com/>
2. Google Earth Sites  
<http://earth.google.com/sites/>
3. Google Earth KML Gallery  
<http://earth.google.com/gallery/index.html>
4. Google Lit Trips!  
<http://www.googlelittrips.com/>
5. GE Lessons - Teaching with Google Earth  
<http://www.gelessons.com/lessons/teachingwithGE.html>
6. Smithsonian: Encompassing the Earth  
<http://www.asia.si.edu/EncompassingtheGlobe/default.htm>
7. Google Earth Community: WWII Places, Battles and Special Ops  
<http://bbs.keyhole.com/ubb/showflat.php?Cat=0&Number=112882>
8. Spectacular satellite images of the world  
<http://www.kmzlinks.com/>
9. Google Earth Link Startpage  
<http://vacationworld.googlepages.com/files>
10. Scholastic: Explore Your Earth  
<http://teacher.scholastic.com/lessonplans/exploreyourearth/>
11. National Weather Service Enhanced Radar Images: Ridge Image and Warning Output to KML/KMZ  
<http://radar.weather.gov/ridge/kmzgenerator.php>

